

# Blowers TRL/FRL/FEA

## Data sheet

The Kongskilde TRL high-pressure blowers are available in a wide range of sizes - providing a variety of performance characteristics capable of meeting specific industrial requirements.

The TRL range with accessories is ideal for conveying of granular material and similar products with specific weight up to 60 lbs/ft<sup>3</sup>.

They are also suitable for most suction purposes e.g. suction of welding fumes as well as to solve many ventilation tasks.

The small and medium-sized blowers are one-stage centrifugal blowers with closed rotors, whereas TRL 300 and 500 have two and three stages respectively, which also are equipped with closed rotors.

TRL 100/150/200/300 and 500 are equipped with an air regulator.

Combining the blower with an air regulator optimises the conveying air speed by keeping the air velocity approx. 5,200 fpm, which minimises damage of the material even when conveying delicate materials.

The constant air velocity also prevents overloading of the motor and minimizes the power consumption.

### TRL 30/50/100

The TRL 30/50 and 100 are directly driven and supplied with air intake mesh guards.

The directly driven blowers are fitted with motors from 3.0 to 10.0 HP.

### TRL 150/200

The blowers are delivered with a V-belt transmission.

Within the TRL 150 and 200 blower range the pressure and air volume can always be adjusted to the application by the ability of adjusting the rpm of the rotor.

The blowers can be fitted with 15.0 to 20.0 HP motors, which have been adjusted to the rpm of the rotor.

### TRL 300/500

The special advantage of the TRL 300/500 blowers are that they are capable of supplying an exceptional high pressure created by the two or

three-stage construction as each stage of the blower increases the air pressure.

### FRL/FEA 15

Kongskildes FRL 15 is a one-stage centrifugal blower with an open rotor and 8 backward curved blades. Therefore, light material e.g. plastic flakes can successfully be conveyed through the blower.

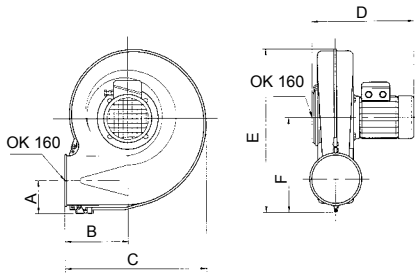
The blower is at the same time very suitable for light dust, shavings exhaust purposes.

The FEA 15 is also a one-stage centrifugal blower with 6 forward curved blades. It is particularly built for ventilation tasks. Suitable applications include suction of welding fumes and gases.



# Dimensions

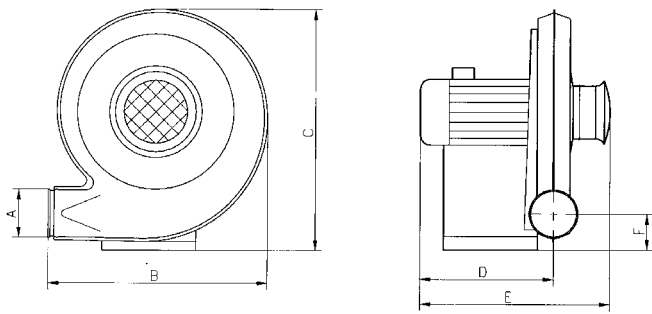
## FRL/FEA 15



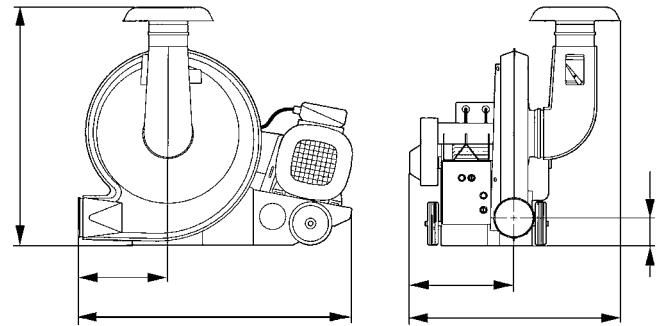
Inch	A	B	C	D	E	F
FRL/FEA 15	4.2	8.1	18.2	14.8	20.9	12.1
TRL 30	OK160	24.8	27.4	16.1	22.0	5.9
TRL 50	OK160	27.8	27.4	16.1	22.0	5.9
TRL 100	OK160	29.9	33.3	17.2	26.9	5.4
TRL 150	OK160	44.9	32.7	16.5	26.8	4.7
TRL 200	OK160	44.9	39.4	16.5	33.9	4.7
TRL 300	OK160	48.2	36.6	23.0	44.0	4.7
TRL 500	OK160	54.3	39.6	11.4	39.2	4.3

Dimensions D and E will vary according to motor type

## TRL 30/50/100



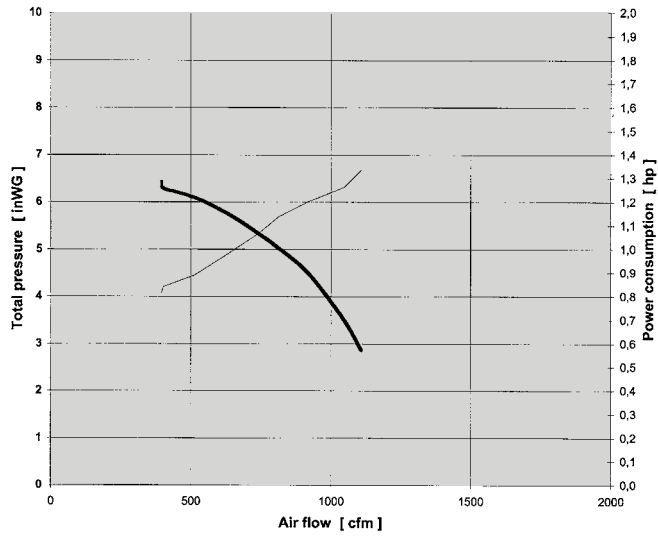
## TRL 150/200/300/500



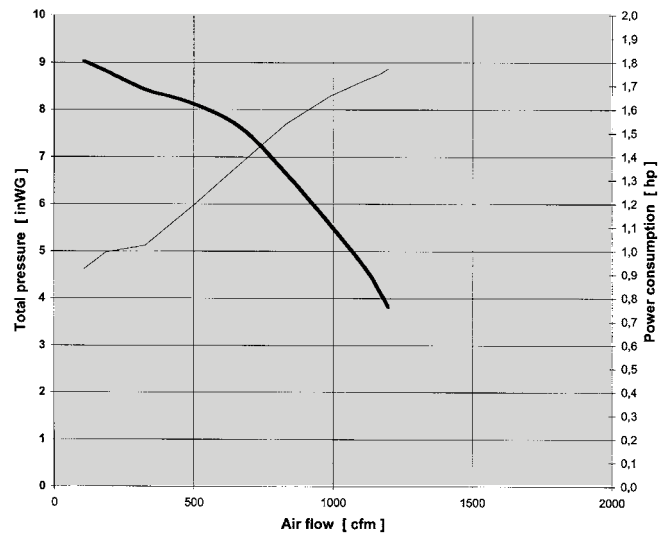
# Technical Data

Technical Data	FRL/FEA 15	TRL 30	TRL 50	TRL 100	TRL 150	TRL 200	TRL 300	TRL 500	
		Direct Drive				Belt Drive			
Motor Output HP	1.5	3	5	10	15	20	30	50	
Electrical Supply US/CND	3 x 460 V / 60 Hz / 3 x 575 V / 60 Hz								
Amp. Consumption (460/575V)	2.3/1.8	3.7/3.1	6.0/4.8	11.5/9.2	17.0/13.8	23.0/18.5	34.0/28.0	56.0/44.0	
Motor rpm	3500								
Weight incl. motor lbs. (460V)	46	100	168	280	406	430	779	1046	
Weight incl. motor lbs. (575V)	46	100	166	287	406	455	763	1057	
Rotor rpm	3500	3500	3500	3500	4200	4700	4100	4300	
Noise level, 1 m, dB(A)	82	83	83	90	97		93	93	
Noise level, 7 m, dB(A)	61	64	64	73	81		78	80	

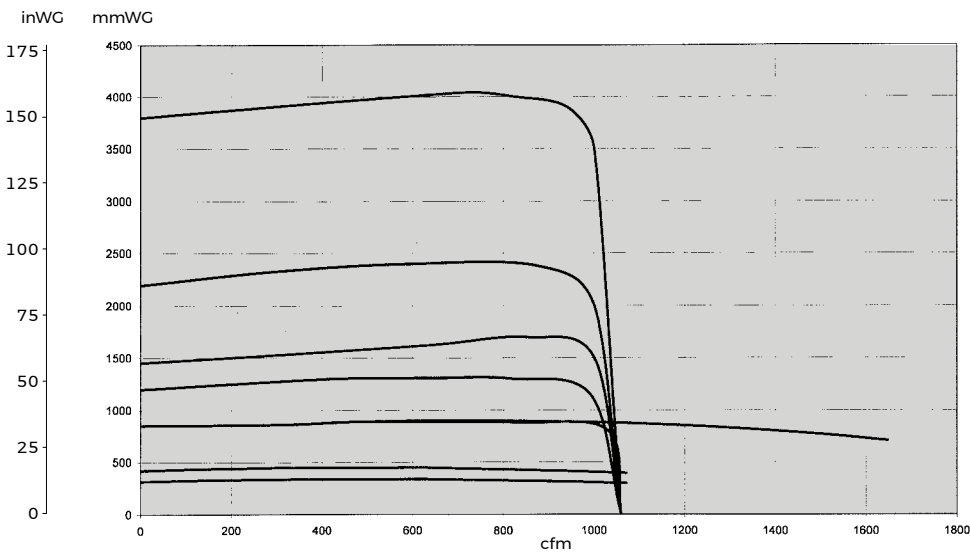
# FEA 15



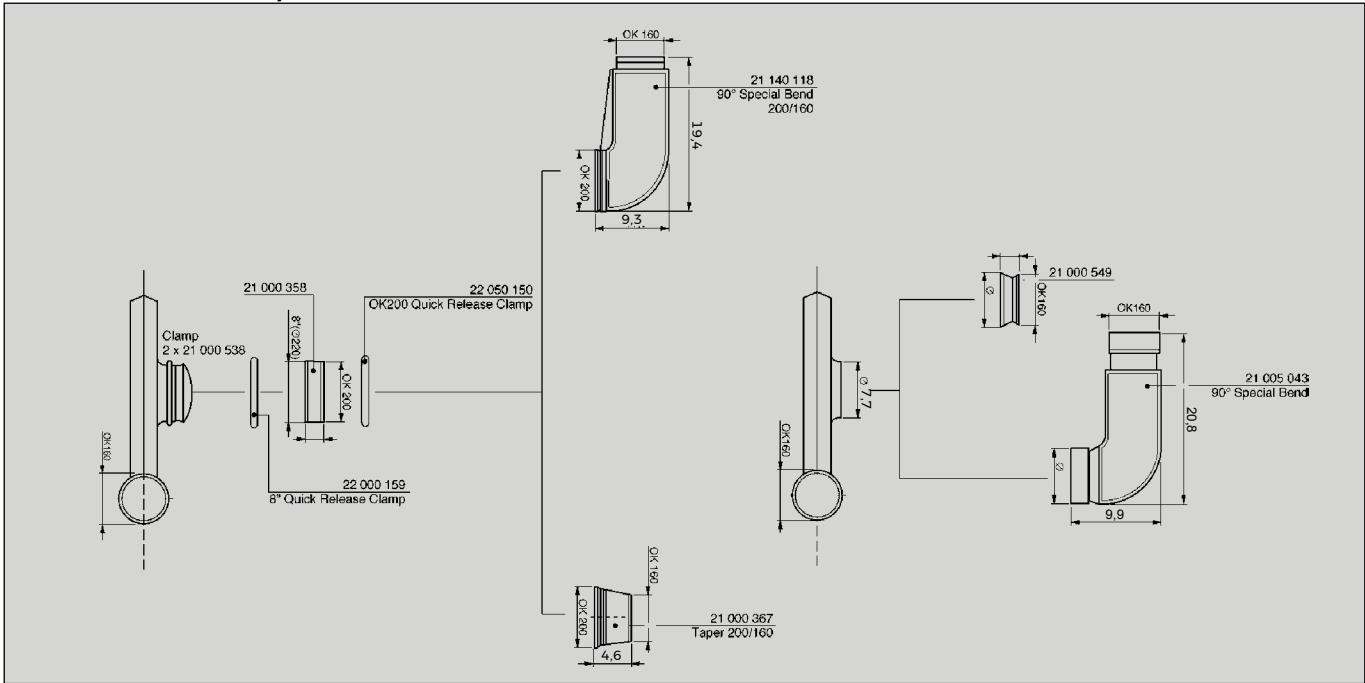
# FRL15



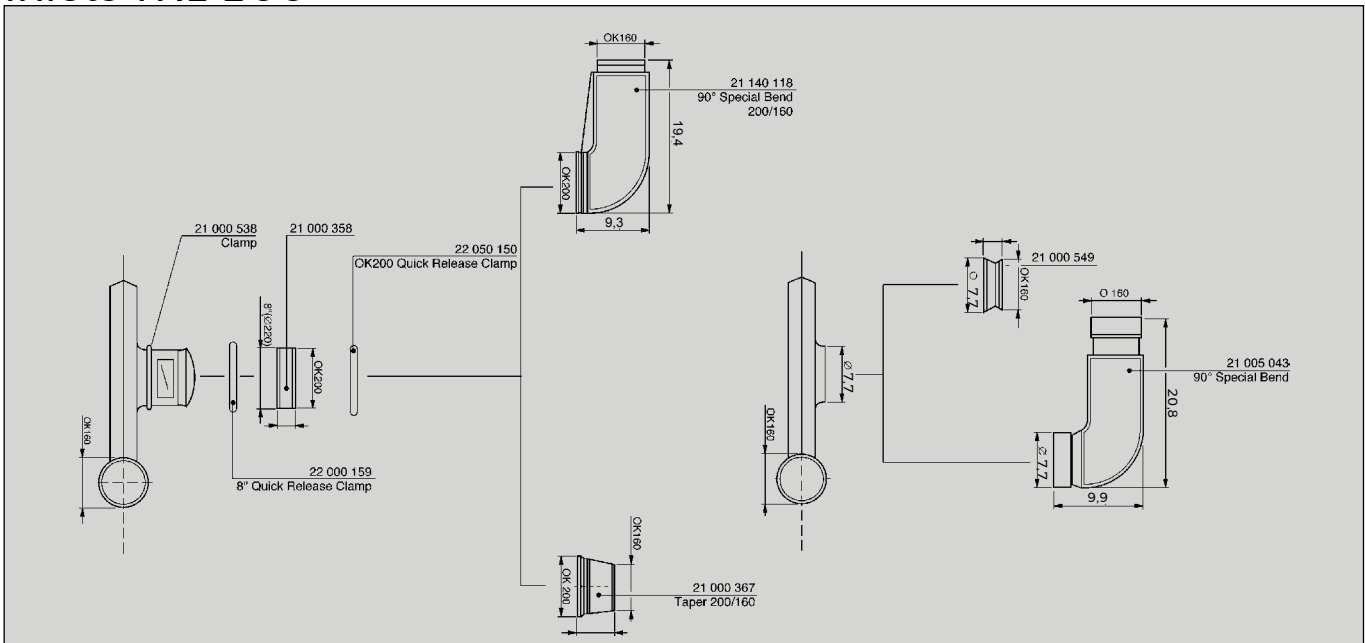
# FEA TRL 30/50/100/150/200/300/500



## Inlets TRL 30/50



## Inlets TRL 100



Subject to be changed without notice. 123001325 KNA/GB/TRL/DATA/318

**Kongskilde Industries Inc.**

Tel.: +1 309 452 3300

kna@kongskilde-industries.com

www.kongskilde-industries.com

**K KONGSKILDE**  
Air solutions / your success